

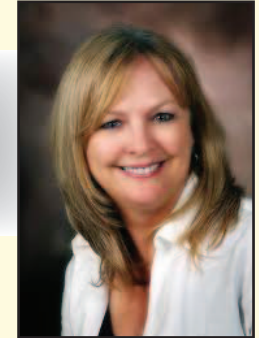
★ ★ ★ Who will represent your values? ★ ★ ★

INCUMBENT



Jody Richards
(D-Bowling Green)

House District 20



Regina Webb
(R-Bowling Green)

The information below was compiled by candidate's voting record, and a candidate questionnaire distributed by the Commonwealth Policy Center, a non-profit, non-partisan Kentucky organization.

1 & 2. Voted for HB 290 (2010) which would have increased Kentucky's debt by approximately \$1 billion and added \$270 million in new taxes on businesses. Source: Journal of the House of Representatives, 2010 Regular Session, Volume V, p. 5383.

3. Walked out on Ultrasound Informed Consent bill SB 40 (2008), which required abortionists to give maximum information to women seeking an abortion instead of keeping them in the dark and withholding the ultrasound. Source: Journal of the House of Representatives, 2008 Regular Session, Volume IV, p. 4981.

4. On record voting for HB 299 (2005) which dramatically increased pension benefits for legislators. Some legislators will receive estimated lifetime retirement benefits of over \$1 million. Source: Journal of the House of Representatives, 2005 Regular Session, Volume V, p. 6151.

NO ¹	Limit Government Spending	YES
NO ²	Lower State Debt	YES
NO ³	Sanctity of Life	100% pro-life <small>(Endorsed by Kentucky Right to Life)</small>
YES ⁴	Super-Sized Pensions for Legislators	NO



VOTE
REGINA WEBB

**A VOTE FOR REGINA WEBB IS A VOTE FOR
FISCAL RESPONSIBILITY, PRO-LIFE AND PRO-FAMILY VALUES.
VOTE WEBB TUESDAY, NOVEMBER 6!**