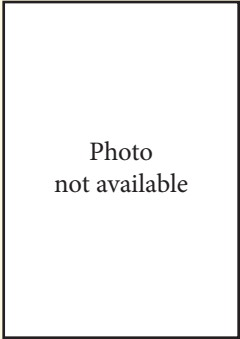


★ ★ ★ Who will represent your values? ★ ★ ★



**Bradley
Montgomery
(D-Berea)**

House District 36

The information below was compiled by a candidate questionnaire distributed by the Commonwealth Policy Center, a non-profit, non-partisan Kentucky organization.



**Jonathan
Shell
(R-Lancaster)**

NO RESPONSE	Sanctity of Life	100% pro-life <small>(Endorsed by Kentucky Right to Life)</small>
NO RESPONSE	Protect Religious Freedom	YES
NO RESPONSE	Protect Marriage Between One Man / One Woman	YES
NO RESPONSE	Gambling Expansion	NO



**VOTE
JONATHAN SHELL**

**A VOTE FOR JONATHAN SHELL IS A VOTE FOR
FISCAL RESPONSIBILITY, PRO-LIFE AND PRO-FAMILY VALUES.
VOTE JONATHAN SHELL TUESDAY, NOVEMBER 6!**